


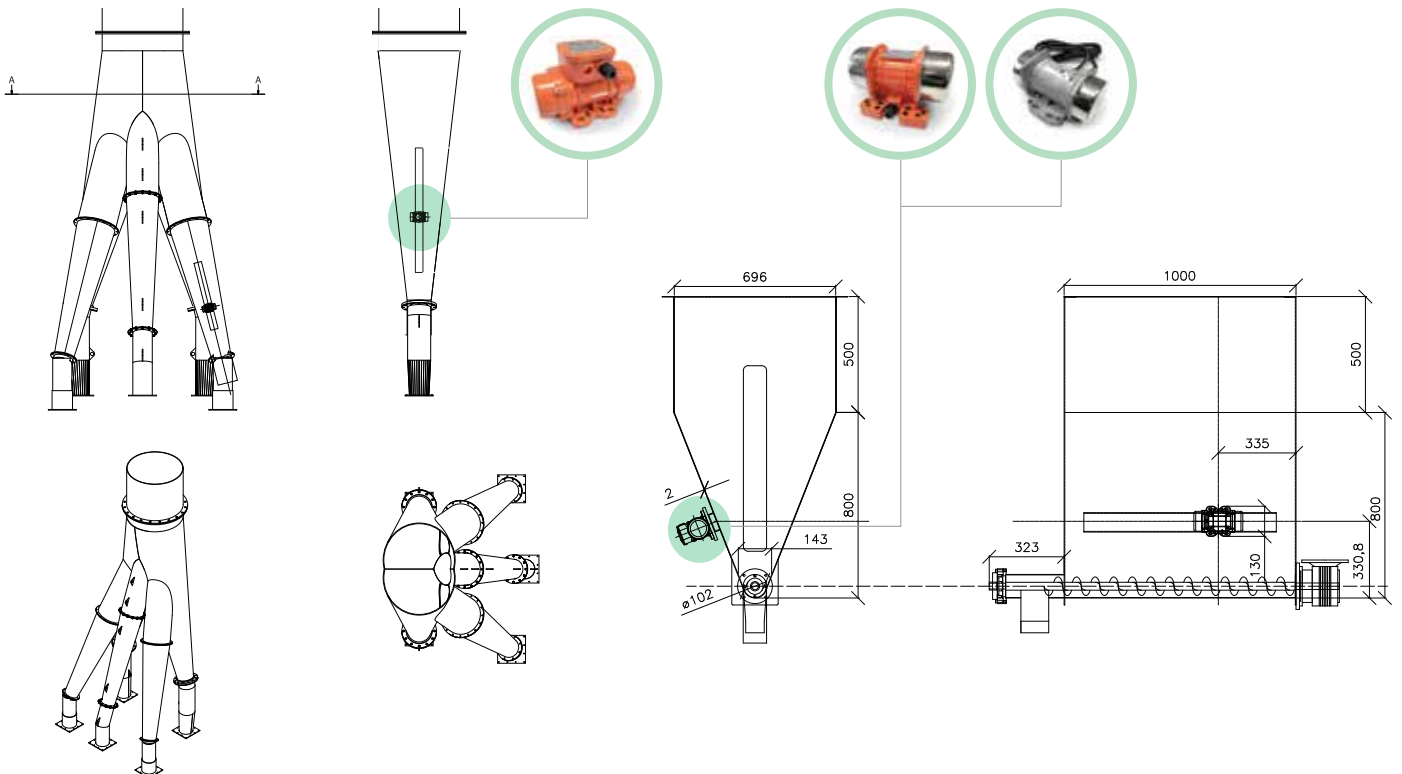


EXTERNAL APPLICATION

ELECTRIC VIBRATORS

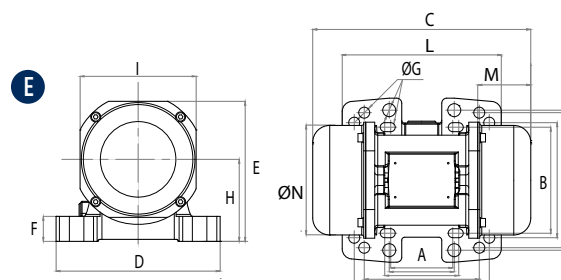
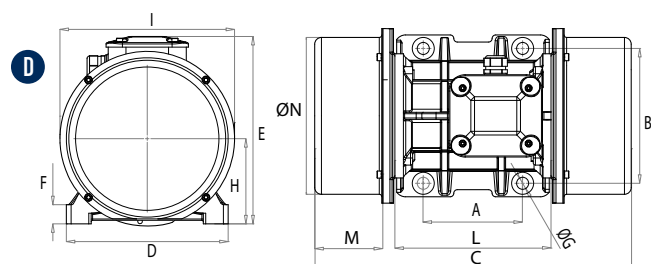
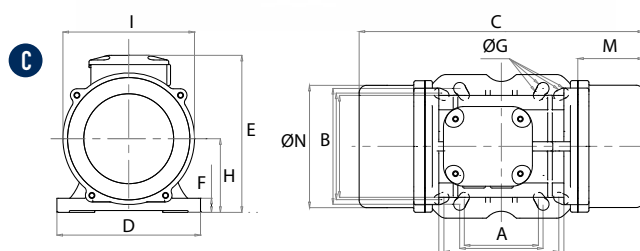
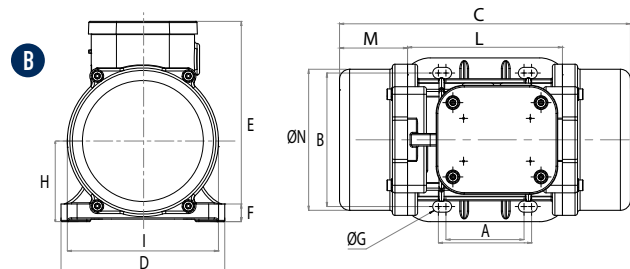
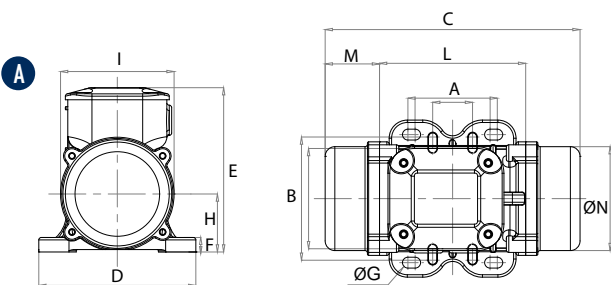
PRODUCT SERIES	APPLICATION	POWDER	FEATURES	BENEFITS
2 POLES MICRO MVE-MICRO 	Small hoppers Micro-screens Chutes Vibrating feeders, tables and channels	Fine, dry powder. Plastics Sugar Bicarbonate Seeds	Compact, uni-body, heavy-duty design. Supplied with stainless steel covers in standard version. Atex II2D T100°C.	Economical Easy to install Single phase cable with built-in capacitor Adjustable force
2 POLES MVE 	Silos Hoppers Dispensers Agitators Mixers Filter cleaning Vibrating feeders and tables	Fine and dry powders, granules. Cement Flour Grit Sugar	Suitable for indoor and outdoor use. Silos and hoppers of any material and capacity from 200 to 10,000 kg. Atex II2D T100°C.	Economical Wide range Special windings for different geographical areas Adjustable force
DIRECT CURRENT MVE-DC 	Automotive Hoppers Salt and manure spreaders Dump trucks Concrete pump grids	Granular powders. Concrete Fertilizers Corn Soy Rice Seeds Salt Sand	Stainless steel covers. DC Motor 3,000 RPM 12V-24V. Power from 80 to 520 W. Resistant to oxidation.	Economical Robust Safe Terminal box connection sealed (option) Adjustable force

APPLICATIONS





MVE - 2 poles electric vibrators



DIMENSIONAL SPECIFICATIONS

THREE PHASE		SINGLE PHASE	DRAWING	SIZE	C		M		A		B		ØG		HOLES	D		E		F		H		I		L		N		WEIGHT	
50 / 60 Hz	U.S. 60 Hz	50 / 60 Hz			mm	in	mm	in	mm	in	mm	in	mm	in		mm	in	mm	in	mm	in	mm	in	mm	in	mm	in	mm	in	mm	in
MVE 60/3	MVE 160/2	MVE 60/3M	A	10	211	8.31	45	1.77	62-74	2.44-2.91	106	4.17	9	0.35	4	130	5.12	136	5.35	12	0.47	48	1.89	94	3.70	121	4.76	85	3.35	4.2	9.3
MVE 100/3	MVE 220/2	MVE 100/3M	A	10	211	8.31	45	1.77	33	1.30	83-102	3.27-4.02	7	0.28	4	130	5.12	136	5.35	12	0.47	48	1.89	94	3.70	121	4.76	85	3.35	4.6	10.1
MVE 200/3	MVE 440/2	MVE 200/3M	B	20	231	9.09	54	2.13	62-74	2.44-2.91	106	4.17	9	0.35	4	131	5.16	159	6.26	15	0.59	64	2.52	121	4.76	123	4.84	112	4.41	7.0	15.4
MVE 202/3	MVE 444/2	MVE 202/3M	E	23	218	8.58	53	2.09	62-74	2.44-2.91	106	4.17	9	0.35	4	164	6.46	140	5.51	25	0.98	82	3.23	116	4.57	159	6.26	110	4.33	7.2	15.9
									65	2.56	140	5.51	13	0.51																	
									115	4.53	135	5.31	11	0.43																	
MVE 300/3	MVE 690/2	MVE 300/3M	C	30	253	9.96	45	1.77	80	3.15	110	4.33	11	0.43	4	154	6.06	175	6.89	15	0.59	79	3.11	142	5.59	163	6.42	131	5.16	9.8	21.6
									90	3.54	125	4.92	13	0.51																	
									124	4.88	110	4.33	11	0.43																	
MVE 400/3	MVE 890/2	-	C	30	273	10.75	55	2.17	135	5.31	115	4.53	11	0.43	4	154	6.06	175	6.89	15	0.59	79	3.11	142	5.59	163	6.42	131	5.16	10.3	22.7
									135	5.31	115	4.53	11	0.43																	
MVE 500/3	MVE 1200/2	-	D	40	334	13.15	78	3.07	105	4.13	140	5.51	13	0.51	4	168	6.61	196	7.72	22	0.87	92	3.62	169	6.65	178	7.01	158	6.22	15.8	34.8
MVE 700/3	MVE 1700/2	-	D	40	334	13.15	78	3.07	105	4.13	140	5.51	13	0.51	4	168	6.61	196	7.72	22	0.87	92	3.62	169	6.65	178	7.01	158	6.22	16.5	36.4
MVE 800/3	MVE 1800/2	-	D	50	321	12.64	58	2.28	120	4.72	170	6.69	17	0.67	4	208	8.19	210	8.27	22	0.87	94	3.70	180	7.09	205	8.07	170	6.69	20.6	45.4

This information is furnished without warranty, representation, inducement or license of any kind. It is accurate to the best OLI knowledge or is obtained from sources believed to be accurate. OLI therefore assumes no legal responsibility.



MVE THREE PHASE

MODEL		ELECTRICAL FEATURES																				
		WORKING MOMENT				CENTRIFUGAL FORCE				POWER				CURRENT		COSΦ		IA/IN		CLASSII DIV.2	II 2D	CABLE GLAND
		kgcm		inlb		kg		lb		kW		hp		A max (Y)								
50 /60 Hz	U.S. 60 Hz	50Hz	60Hz	50Hz	60Hz	50Hz	60Hz	50Hz	60Hz	50Hz	60Hz	50Hz	60 H	400V	460V	50Hz	60Hz	50Hz	60Hz	Temp. Class	Temp. Class	Class Temp.
		50Hz	60Hz	50Hz	60Hz	50Hz	60Hz	50Hz	60Hz	50Hz	60Hz	50Hz	60Hz	T	(°C)							
MVE 60/3	MVE 160/2	1.3	0.9	1.1	0.9	66	71	145	156	0.08	0.09	0.11	0.12	0.16	0.18	0.74	0.82	3.0	3.0	T4	100	M16 80°C
MVE 100/3	MVE 220/2	1.9	1.3	1.7	1.1	98	95	216	209	0.1	0.11	0.13	0.15	0.19	0.18	0.76	0.85	3.0	3.0	T4	100	M16 80°C
MVE 200/3	MVE 440/2	3.7	2.6	3.2	2.3	187	189	412	417	0.18	0.21	0.24	0.28	0.35	0.35	0.78	0.87	3.3	3.3	T4	100	M20 80°C
MVE 202/3	MVE 444/2	3.7	2.6	3.2	2.3	187	189	412	417	0.18	0.21	0.24	0.28	0.35	0.35	0.78	0.87	3.3	3.3	T4	100	M20 80°C
MVE 300/3	MVE 690/2	6.4	4.5	5.5	3.9	321	323	708	712	0.27	0.28	0.36	0.38	0.52	0.45	0.84	0.89	3.6	3.5	T4	100	M20 80°C
MVE 400/3	MVE 890/2	7.9	5.7	6.9	4.9	407	411	897	906	0.30	0.36	0.40	0.48	0.58	0.60	0.88	0.88	3.5	3.5	T4	100	M20 80°C
MVE 500/3	MVE 1200/2	10.3	7.4	8.9	6.4	530	534	1168	1177	0.50	0.58	0.67	0.78	0.96	0.97	0.84	0.87	4.0	4.2	T4	100	M20 80°C
MVE 700/3	MVE 1700/2	14.9	10.6	12.9	9.2	758	765	1671	1686	0.66	0.75	0.89	1.01	1.25	1.24	0.83	0.88	4.3	5.0	T4	100	M20 80°C
MVE 800/3	MVE 1800/2	15.7	11.1	13.6	9.6	794	800	1750	1764	0.75	0.90	1.01	1.21	1.45	1.50	0.79	0.84	3.8	3.8	T4	100	M20 80°C

MVE SINGLE PHASE

MODEL			ELECTRICAL FEATURES																						
			WORKING MOMENT				CENTRIFUGAL FORCE				POWER				CURRENT			CAPACITOR			CLASSII DIV.2	II 2D	CABLE GLAND		
			kgcm		inlb		kg		lb		kW		hp		A max			µF							
50 Hz	60 Hz	60 Hz U.S. Market	50Hz	60Hz	50Hz	60Hz	50Hz	60Hz	50Hz	60Hz	50Hz	60Hz	50Hz	60Hz	50Hz	60Hz	230V	220V	115V	220V	220V	115V	Temp. Class	Temp. Class	Class
			50Hz	60Hz	50Hz	60Hz	50Hz	60Hz	50Hz	60Hz	50Hz	60Hz	50Hz	60Hz	50Hz	60Hz	50Hz	60Hz	50Hz	60Hz	60Hz	T	(°C)	Temp.	
MVE 60/3M	MVE 60/36M	MVE 160/2M	1.3	1.0	1.1	0.9	66	71	145	156	0.08	0.09	0.11	0.12	0.43	0.43	1.03	3.0	3.0	6.3	T4	100	M16		
MVE 100/3M	MVE 100/36M	MVE 220/2M	1.9	1.3	1.7	1.1	98	95	216	209	0.10	0.11	0.13	0.15	0.54	0.54	1.30	4.0	4.0	8.0	T4	100	80°C		
MVE 200/3M	MVE 200/36M	MVE 440/2M	3.7	2.6	3.2	2.3	187	189	412	417	0.18	0.21	0.24	0.28	1.14	1.14	2.62	8.0	8.0	16.0	T4	100	M20		
MVE 202/3M	MVE 202/36M	MVE 444/2M	3.7	2.6	3.2	2.3	187	189	412	417	0.18	0.21	0.24	0.28	1.14	1.14	2.62	8.0	8.0	16.0	T4	100	M20		
MVE 300/3M	MVE 300/36M	MVE 690/2M	6.4	4.4	5.5	3.9	321	323	708	712	0.27	0.28	0.36	0.38	1.58	1.58	3.43	12.5	12.5	25.0	T4	100	80°C		

MVE - 2 POLES ELECTRIC VIBRATORS - THREE PHASE OR SINGLE PHASE

APPLICATION Hopper and silo - feeder - screen

POWDER Fine - dry granular

PROBLEM SOLVING Bridge and rat-holing

FEATURES

DUTY CYCLE Continuous - S1

FREQUENCY RANGE From 20Hz to 60Hz [with inverter]

ENVIRONMENT TEMPERATURE From -20 °C to 40 °C (from -4 °F to 104 °F)

MAX NOISE LEVEL 76 dB(a)

ATEX II3D Ex tc IIIC Tx IP66

MATERIAL Aluminium body; aluminium (powder painted) cover

ACCESSORIES

CAPACITOR Available

OPTIONS

ATEX Ex II 2D Ex t IIIC Tx Db IP66
Ex tb IIIC Tx Db IP66

CUSTOMISED CABLE Available

