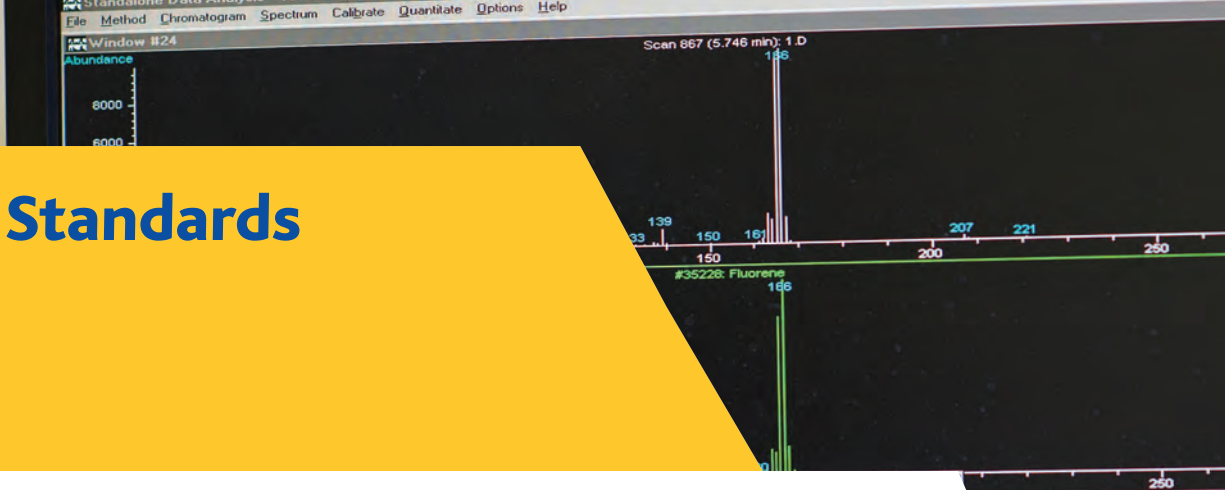


Phenol Standards



Summary of Features & Benefits:

Commercial Benefits

- Ready to use (dilute for use as calibration and/or quality control standards)
- Extensive range of organic compound mixes and single compound standards available
- Can be used with a variety of instruments including GC, GC-MS, HPLC and LC-MS
- Designed specifically for use in EPA or EU analytical methods
- Presented in high quality amber ampoules
- Customised formulations available

Technical Benefits

- Produced in accordance with EPA methods
- Consistency of product - Independent, Traceable, Certified
- Ideal for use in EPA 500, 600 and 8000 series methods
- Certificates of Analysis and Safety Data Sheets available online

These products are prepared gravimetrically on a weight/volume basis. Both solute and solvent are prepared using equipment calibrated by Reagecon engineers. Reagecon holds IEC/ISO 17025 accreditation for calibration of laboratory balances and pipettes (INAB Ref:265C). The resulting equipment Calibration Certificates are issued in accordance with the requirements of ISO/IEC 17025. The results are then reported and certified in µg/ml on the basis of weight and the density measurement of the standard. Reagecon is IEC/ISO 17025 (INAB Ref:264T) Accredited for density measurement using an Oscillating U-Tube Method in accordance with the ASTM D4052 method. The concentration of each standard is verified using a high performance calibrated Gas Chromatograph - Mass Spectrometer (GC-MS Instrument). The calibration of the GC-MS instrument is completed using high purity ISO 17034 accredited Phenol standards from a secondary source similar in Phenol concentration value to these products. The mass spectrum of each of the analytes is confirmed by comparison with the National Institute of Standards and Technology (NIST) mass spectral library.



Phenol Mixed Standards

Product No.	Description	Concentration	US EPA Methods	Packed in Ampoule
REPHE001 (11 Compound Mix)	2-Chlorophenol	Each analyte at 2,000µg/ml in	604	1ml
	2,4-Dichlorophenol	high-purity Dichloromethane		
	2,4-Dimethylphenol	(Methylene Chloride)		
	2-Methyl-4,6-dinitrophenol (DNOC)			
	2-Nitrophenol			
	4-Nitrophenol			
	Pentachlorophenol			
	Phenol			
	2,4,6-Trichlorophenol			
	4-Chloro-3-methylphenol			
	2,4-Dinitrophenol			
REPHE002 (7 Compound Mix)	2,6-Dichlorophenol	Each analyte at 2,000µg/ml in	604	1ml
	2-Methylphenol	high-purity Dichloromethane		
	3-Methylphenol	(Methylene Chloride)		
	4-Methylphenol			
	2,4,5-Trichlorophenol			
	2,3,4,6-Tetrachlorophenol			
	2-sec-Butyl-4,6-dinitrophenol (Dinoseb)			
REPHE003 (11 Compound Mix)	2-Chlorophenol	Each analyte at 2,000µg/ml in	604	1ml
	2,4-Dichlorophenol	high-purity Methanol		
	2,4-Dimethylphenol			
	2-Methyl-4,6-dinitrophenol (DNOC)			
	2-Nitrophenol			
	4-Nitrophenol			
	Pentachlorophenol			
	Phenol			
	2,4,6-Trichlorophenol			
	4-Chloro-3-methylphenol			
	2,4-Dinitrophenol			
REPHE004 (5 Compound Mix)	4-Chloro-3-methylphenol	Each analyte at 2,000µg/ml in	604	1ml
	2-Chlorophenol	high-purity Methanol		
	4-Nitrophenol			
	Pentachlorophenol			
	Phenol			

Phenol Mixed Standards

Product No.	Description	Concentration	US EPA Methods	Packed in Ampoule
REPHE005 (18 Compound Mix)	2-Chlorophenol	Each analyte at 2,000µg/ml in high-purity Isopropanol	8270	1ml
	2,4-Dichlorophenol			
	2,4-Dimethylphenol			
	2-Methyl-4,6-dinitrophenol (DNOC)			
	2-Nitrophenol			
	4-Nitrophenol			
	Pentachlorophenol			
	Phenol			
	2,4,6-Trichlorophenol			
	4-Chloro-3-methylphenol			
	2,4-Dinitrophenol			
	2,6-Dichlorophenol			
	2-Methylphenol			
	3-Methylphenol			
	4-Methylphenol			
	2,4,5-Trichlorophenol			
	2,3,4,6-Tetrachlorophenol			
	2-sec-Butyl-4,6-dinitrophenol (Dinoseb)			
REPHE006 (13 Compound Mix)	4-Chloro-3-methylphenol	Each analyte at 2,000µg/ml in high-purity Methanol	8270	1ml
	2-Chlorophenol			
	2,4-Dichlorophenol			
	2,6-Dichlorophenol			
	2,4-Dimethylphenol			
	2,4-Dinitrophenol			
	2-Methyl-4,6-dinitrophenol (DNOC)			
	2-Nitrophenol			
	4-Nitrophenol			
	Pentachlorophenol			
	Phenol			
	2,3,4,6-Tetrachlorophenol			
	2,4,6-Trichlorophenol			

Product No.	Description	Concentration	US EPA Methods	Packed in Ampoule
REPHE007 (11 Compound Mix)	4-Chloro-3-methylphenol	Each analyte at 2,000µg/ml in high-purity Methanol	8270	1ml
	2-Chlorophenol			
	2,4-Dichlorophenol			
	2,4-Dimethylphenol			
	2-Methyl-4,6-dinitrophenol (DNOC)			
	2,4-Dinitrophenol			
	2-Nitrophenol			
	4-Nitrophenol			
	Pentachlorophenol			
	Phenol			
	2,4,6-Trichlorophenol			
REPHE008 (5 Compound Mix)	4-Chloro-3-methylphenol	Each analyte at 2,000µg/ml in high-purity Dichloromethane (Methylene Chloride)	8270	1ml
	2-Chlorophenol			
	4-Nitrophenol			
	Pentachlorophenol			
	Phenol			
REPHE009 (6 Compound Mix)	4-Chloro-3-methylphenol	Each analyte at 2,000µg/ml in high-purity Dichloromethane (Methylene Chloride)	8270	1ml
	2,4-Dinitrophenol			
	2-Nitrophenol			
	Pentachlorophenol			
	Phenol			
	2,4,6-Trichlorophenol			
REPHE010 (6 Compound Mix)	2-Methylphenol	Each analyte at 2,000µg/ml in high-purity Dichloromethane (Methylene Chloride)	1311	1ml
	3-Methylphenol			
	4-Methylphenol			
	Pentachlorophenol			
	2,4,6-Trichlorophenol			
	2,4,5-Trichlorophenol			

Phenol Mixed Standards

Product No. Packed in 1ml Ampoule	Description - Each at 100µg/ml in Purge & Trap Methanol
REPHE015 (17 compound mix)	2,3,4,6-Tetrachlorophenol
	2,4,5-Trichlorophenol
	2,4,6-Trichlorophenol
	2,4-Dichlorophenol
	2,4-Dimethylphenol
	2,4-Dinitrophenol
	2,6-Dichlorophenol
	2-Chlorophenol
	2-Methyl-4,6-dinitrophenol (DNOC)
	2-Methylphenol
	2-Nitrophenol
	3-Methylphenol
	4-Chloro-3-methylphenol
	4-Methylphenol
	4-Nitrophenol
	Pentachlorophenol
	Phenol

Product No. Packed in 1ml Ampoule	Description - Each at 5000µg/ml in Methylene Chloride
REPHE016 (14 compound mix)	2,4,5-Trichlorophenol
	2,4,6-Trichlorophenol
	2,4-Dichlorophenol
	2,4-Dimethylphenol
	2,4-Dinitrophenol
	2-Chlorophenol
	2-Methyl-4,6-dinitrophenol (DNOC)
	2-Methylphenol
	2-Nitrophenol
	4-Chloro-3-methylphenol
	4-Methylphenol
	4-Nitrophenol
	Pentachlorophenol
	Phenol

Product No. Packed in 1ml Ampoule	Description - Each at 2000µg/ml in Methylene Chloride
REPHE017 (14 compound mix)	2,4,5-Trichlorophenol
	2,4,6-Trichlorophenol
	2,4-Dichlorophenol
	2,4-Dimethylphenol

Product No. Packed in 1ml Ampoule	Description - Each at 1000µg/ml in Methylene Chloride
REPHE018 (14 compound mix)	2,4,6-Trichlorophenol
	2,4-Dichlorophenol
	2,4-Dimethylphenol
	2,4-Dinitrophenol
	2,6-Dichlorophenol
	2-Chlorophenol
	2-Methyl-4,6-dinitrophenol (DNOC)
	2-Methylphenol
	2-Nitrophenol
	4-Chloro-3-methylphenol
	4-Methylphenol
	4-Nitrophenol
	Pentachlorophenol
	Phenol

Product No. Packed in 1ml Ampoule	Description - Each at 1000µg/ml in Purge & Trap Methanol
REPHE020 (12 compound mix)	2,4,6-Trichlorophenol
	2,4-Dichlorophenol
	2,4-Dimethylphenol
	2,4-Dinitrophenol
	2-Chlorophenol
	2-Methyl-4,6-dinitrophenol (DNOC)
	2-Nitrophenol
	3-Methylphenol
	4-Chloro-3-methylphenol
	4-Nitrophenol
	Pentachlorophenol
	Phenol

Product No. Packed in 1ml Ampoule	Description - Each at 2000µg/ml in Methylene Chloride
REPHE023 (12 compound mix)	2,4,6-Trichlorophenol
	2,4-Dichlorophenol
	2,4-Dimethylphenol
	2,4-Dinitrophenol
	2-Chlorophenol
	2-Methyl-4,6-dinitrophenol (DNOC)
	2-Methylphenol
	2-Nitrophenol
	4-Chloro-3-methylphenol
	4-Nitrophenol
	Pentachlorophenol
	Phenol

Product No. Packed in 1ml Ampoule	Description - Each at 2000µg/ml in Isopropanol
REPHE024 (11 compound mix)	2,4,6-Trichlorophenol
	2,4-Dichlorophenol
	2,4-Dimethylphenol
	2,4-Dinitrophenol
	2-Chlorophenol
	2-Methyl-4,6-dinitrophenol (DNOC)
	2-Nitrophenol
	4-Chloro-3-methylphenol
	4-Nitrophenol
	Pentachlorophenol
	Phenol

Product No. Packed in 1ml Ampoule	Description - Each at 500µg/ml in Purge & Trap Methanol
REPHE026 (11 compound mix)	2,4,6-Trichlorophenol
	2,4-Dichlorophenol
	2,4-Dimethylphenol
	2,4-Dinitrophenol
	2-Chlorophenol
	2-Methyl-4,6-dinitrophenol (DNOC)
	2-Nitrophenol
	4-Chloro-3-methylphenol
	4-Nitrophenol
	Pentachlorophenol
	Phenol

Phenol Mixed Standards

Product No. Packed in 1ml Ampoule	Description - Each at 20µg/ml in Purge & Trap Methanol
REPHE028 (11 compound mix)	2,4,6-Trichlorophenol
	2,4-Dichlorophenol
	2,4-Dimethylphenol
	2,4-Dinitrophenol
	2-Chlorophenol
	2-Methyl-4,6-dinitrophenol (DNOC)
	2-Nitrophenol
	4-Chloro-3-methylphenol
	4-Nitrophenol
	Pentachlorophenol
	Phenol

Product No. Packed in 1ml Ampoule	Description - Each at 1000µg/ml in Purge & Trap Methanol
REPHE029 (11 compound mix)	2,4,6-Trichlorophenol
	2,4-Dichlorophenol
	2,4-Dimethylphenol
	2,4-Dinitrophenol
	2-Chlorophenol
	2-Methyl-4,6- dinitrophenol (DNOC)
	2-Nitrophenol
	4-Chloro-3-methylphenol
	4-Nitrophenol
	Pentachlorophenol
	Phenol

Product No. Packed in 1ml Ampoule	Description - Each at 500µg/ml in Purge & Trap Methanol
REPHE030 (11 compound mix)	2,4-Dichlorophenol
	2,4-Dimethylphenol
	2,4-Dinitrophenol
	2-Chlorophenol
	2-Methyl-4,6-dinitrophenol (DNOC)
	2-Nitrophenol
	2-sec-Butyl-4,6-dinitrophenol (Dinoseb)
	4-Chloro-3-methylphenol
	4-Nitrophenol
	Pentachlorophenol
	Phenol

Product No. Packed in 1ml Ampoule	Description - Each at 2000µg/ml in Methylene Chloride
REPHE031 (11 compound mix)	2,4,6-Trichlorophenol
	2,4-Dichlorophenol
	2,4-Dimethylphenol
	2,4-Dinitrophenol
	2-Chlorophenol
	2-Nitrophenol
	2-sec-Butyl-4,6- dinitrophenol (Dinoseb)
	4-Chloro-3-methylphenol
	4-Nitrophenol
	Pentachlorophenol
	Phenol

Product No. Packed in 1ml Ampoule	Description - Each at 1000µg/ml in Methylene Chloride
REPHE034 (11 compound mix)	2,4,6-Trichlorophenol
	2,4-Dichlorophenol
	2,4-Dimethylphenol
	2,4-Dinitrophenol
	2-Chlorophenol
	2-Methyl-4,6-dinitrophenol (DNOC)
	2-Nitrophenol
	4-Chloro-3-methylphenol
	4-Nitrophenol
	Pentachlorophenol
	Phenol

Product No. Packed in 1ml Ampoule	Description - Each at 2000µg/ml in Methylene Chloride
REPHE037 (9 compound mix)	2,4,6-Trichlorophenol
	2,4-Dichlorophenol
	2,4-Dimethylphenol
	2-Chlorophenol
	2-Methylphenol
	2-Nitrophenol
	4-Chloro-3-methylphenol
	4-Methylphenol
	Phenol

Product No. Packed in 1ml Ampoule	Description - Each at 2000µg/ml in Purge & Trap Methanol
REPHE038 (8 compound mix)	2,4,6-Trichlorophenol
	2,4-Dichlorophenol
	2-Chlorophenol
	2-Methylphenol
	3-Methylphenol
	4-Methylphenol
	Pentachlorophenol
	Phenol

Product No. Packed in 1ml Ampoule	Description - Each at 100µg/ml in Purge & Trap Methanol
REPHE039 (8 compound mix)	2,4,6-Trichlorophenol
	2,4-Dichlorophenol
	2-Chlorophenol
	2-Methyl-4,6-dinitrophenol (DNOC)
	3-Methylphenol
	4-Methylphenol
	Pentachlorophenol
	Phenol

Product No. Packed in 1ml Ampoule	Description - Each at 2000µg/ml in Isopropanol
REPHE040 (7 compound mix)	2,3,4,6-Tetrachlorophenol
	2,4,5-Trichlorophenol
	2,6-Dichlorophenol
	2-Methylphenol
	2-sec-Butyl-4,6- dinitrophenol (Dinoseb)
	3-Methylphenol
	4-Methylphenol

Product No. Packed in 1ml Ampoule	Description - Each at 2000µg/ml in Methylene Chloride
REPHE041 (6 compound mix)	2,4,6-Trichlorophenol
	2,4-Dichlorophenol
	2-Nitrophenol
	4-Chloro-3-methylphenol
	Pentachlorophenol
	Phenol

Phenol Mixed Standards

Product No. Packed in 1ml Ampoule	Description - Each at 2000µg/ml in Purge & Trap Methanol
REPHE042 (5 compound mix)	2-Chlorophenol
	4-Chloro-3-methylphenol
	4-Nitrophenol
	Pentachlorophenol
	Phenol

Product No. Packed in 1ml Ampoule	Description - Each at 2000µg/ml in Methylene Chloride
REPHE045 (5 compound mix)	2,4-Dimethylphenol
	2-Methyl-4,6-dinitrophenol (DNOC)
	2-Nitrophenol
	4-Nitrophenol
	Phenol

Product No. Packed in 1ml Ampoule	Description - Each at 2000µg/ml in Methylene Chloride
REPHE046 (5 compound mix)	2,4,5-Trichlorophenol
	2-Methylphenol
	2-sec-Butyl-4,6-dinitrophenol (Dinoseb)
	3-Methylphenol
	4-Methylphenol

Product No. Packed in 1ml Ampoule	Description - Each at 100µg/ml in Purge & Trap Methanol
REPHE047 (4 compound mix)	2,3,4,6-Tetrachlorophenol
	2,4,6-Trichlorophenol
	2,4-Dichlorophenol
	Pentachlorophenol

Product No. Packed in 1ml Ampoule	Description - Each at 4000µg/ml in Methylene Chloride
REPHE048 (4 compound mix)	2,4-Dinitrophenol
	2-Methyl-4,6-dinitrophenol (DNOC)
	4-Nitrophenol
	Pentachlorophenol

Product No. Packed in 1ml Ampoule	Description - Each at 2000µg/ml in Ethanol
REPHE050 (3 compound mix)	2,3,4,6-Tetrachlorophenol
	2,4,6-Trichlorophenol
	Pentachlorophenol

Product No. Packed in 1ml Ampoule	Description - Each in Purge & Trap Methanol	Concentration µg/ml
REPHE022 (12 compound mix)	2,4,6-Trichlorophenol	100
	2,4-Dichlorophenol	100
	2,4-Dimethylphenol	100
	2,4-Dinitrophenol	500
	2-Chlorophenol	100
	2-Methyl-4,6-dinitrophenol (DNOC)	500
	2-Methylphenol	100
	2-Nitrophenol	100
	4-Chloro-3-methylphenol	100
	4-Nitrophenol	500
	Pentachlorophenol	500
	Phenol	100

Product No. Packed in 1ml Ampoule	Description - Each in Purge & Trap Methanol	Concentration µg/ml
REPHE025 (11 compound mix)	2,4,6-Trichlorophenol	500
	2,4-Dichlorophenol	500
	2,4-Dimethylphenol	500
	2,4-Dinitrophenol	1500
	2-Chlorophenol	500
	2-Methyl-4,6-dinitrophenol (DNOC)	2500
	2-Nitrophenol	500
	4-Chloro-3-methylphenol	2500
	4-Nitrophenol	2500
	Pentachlorophenol	2500
	Phenol	600

Product No. Packed in 1ml Ampoule	Description - Each in Purge & Trap Methanol	Concentration µg/ml
REPHE027 (11 compound mix)	2,4,6-Trichlorophenol	1500
	2,4-Dichlorophenol	500
	2,4-Dimethylphenol	500
	2,4-Dinitrophenol	1500
	2-Chlorophenol	500
	2-Methyl-4,6-dinitrophenol (DNOC)	2500
	2-Nitrophenol	500
	4-Chloro-3-methylphenol	2500
	4-Nitrophenol	2500
	Pentachlorophenol	2500
	Phenol	500

Phenol Mixed Standards

Product No. Packed in 1ml Ampoule	Description - Each in Purge & Trap Methanol	Concentration $\mu\text{g/ml}$
REPHE044 (5 compound mix)	2,4,6-Trichlorophenol	40
	2,4-Dichlorophenol	40
	3-Methylphenol	40
	4-Nitrophenol	10
	Pentachlorophenol	40

Product No. Packed in 5 x 1ml Ampoule	Description - Each in Acetone	Concentration $\mu\text{g/ml}$
REPHE121	Bisphenol A	1
	4-tert-Octylphenol	1
	Nonylphenol	5
	4-Nonyl Phenol Monoethoxylate	5
	4-Nonyl Phenol Diethoxylate	5
	4-tert-Octylphenol Monoethoxylate	1
	4-tert Octylphenol Diethoxylate	1

Product No. Packed in 1ml Ampoule	Description - Each in Methylene Chloride	Concentration $\mu\text{g/ml}$	US EPA Methods
REPHE019 (13 compound mix)	2,4,6-Trichlorophenol	1000	526
	2,4-Dichlorophenol	1000	528
	2,4-Dimethylphenol	1000	
	2,4-Dinitrophenol	5000	
	2,6-Dichlorophenol	1000	
	2-Chlorophenol	1000	
	2-Methyl-4,6-dinitrophenol (DNOC)	1000	
	2-Methylphenol	1000	
	2-Nitrophenol	1000	
	4-Chloro-3-methylphenol	1000	
	4-Nitrophenol	1000	
	Pentachlorophenol	1000	
	Phenol	1000	

Product No. Packed in 1ml Ampoule	Description - Each in Purge & Trap Methanol	Concentration µg/ml	US EPA Methods
REPHE021 (12 compound mix)	2,4-Dichlorophenol	1000	525
	2,4-Dimethylphenol	1000	
	2,4-Dinitrophenol	5000	
	2,6-Dichlorophenol	1000	
	2-Chlorophenol	1000	
	2-Methyl-4,6-dinitrophenol (DNOC)	5000	
	2-Methylphenol	1000	
	2-Nitrophenol	1000	
	4-Chloro-3-methylphenol	1000	
	4-Nitrophenol	1000	
	Pentachlorophenol	1000	
	Phenol	1000	

Product No. Packed in 1ml Ampoule	Description - Each in Methylene Chloride	Concentration µg/ml	US EPA Methods
REPHE032 (11 compound mix)	2,4,6-Trichlorophenol	1500	604
	2,4-Dichlorophenol	500	625
	2,4-Dimethylphenol	500	
	2,4-Dinitrophenol	1500	
	2-Chlorophenol	500	
	2-Nitrophenol	500	
	2-sec-Butyl-4,6-dinitrophenol (Dinoseb)	2500	
	4-Chloro-3-methylphenol	2000	
	4-Nitrophenol	2500	
	Pentachlorophenol	2500	
	Phenol	500	

Product No. Packed in 1ml Ampoule	Description - Each at 2000µg/ml in Methylene Chloride	US EPA Methods
REPHE033 (11 compound mix)	2,4-Dichlorophenol	8270B
	2,4-Dimethylphenol	
	2,4-Dinitrophenol	
	2-Chlorophenol	
	2-Methyl-4,6-dinitrophenol (DNOC)	
	2-Nitrophenol	
	2-sec-Butyl-4,6-dinitrophenol (Dinoseb)	
	4-Chloro-3-methylphenol	
	4-Nitrophenol	
	Pentachlorophenol	
Phenol		

Phenol Mixed Standards

Product No. Packed in 1ml Ampoule	Description - Each at 100µg/ml in Purge & Trap Methanol	US EPA Methods
REPHE035 (10 compound mix)	2,4,6-Trichlorophenol	625
	2,4-Dichlorophenol	
	2,4-Dimethylphenol	
	2,4-Dinitrophenol	
	2,6-Dichlorophenol	
	2-Chlorophenol	
	4-Chloro-3-methylphenol	
	4-Nitrophenol	
	Pentachlorophenol	
	Phenol	

Product No. Packed in 1ml Ampoule	Description - Each at 2000µg/ml in Isopropanol	US EPA Methods
REPHE036 (9 compound mix)	2,3,4,6-Tetrachlorophenol	8040
	2,4,5-Trichlorophenol	
	2,4-Dimethylphenol	
	2,4-Dinitrophenol	
	2,6-Dichlorophenol	
	2-Chlorophenol	
	2-sec-Butyl-4,6-dinitrophenol (Dinoseb)	
	3-Methylphenol	
	4-Methylphenol	

Product No. Packed in 1ml Ampoule	Description - Each at 1000µg/ml in Methylene Chloride	US EPA Methods
REPHE049 (4 compound mix)	2,4,6-Trichlorophenol	525
	2,6-Dichlorophenol	
	2-Methyl-4,6-dinitrophenol (DNOC)	
	Phenol	

Phenols Single Compound Standards

Product No.	Description	Concentration	US EPA Methods	Packed in Ampoule
REPHE101	2-Chlorophenol	2000µg/ml in high-purity Methanol	604, 8270, 1311	1ml
REPHE102	2,4-Dichlorophenol	2000µg/ml in high-purity Methanol	604, 8270, 1311	1ml
REPHE103	2,4-Dimethylphenol	2000µg/ml in high-purity Methanol	604, 8270, 1311	1ml
REPHE104	4-Chloro-3-methylphenol	2000µg/ml in high-purity Methanol	604, 8270, 1311	1ml
REPHE105	2-Methyl-4,6-dinitrophenol(DNOC)	2000µg/ml in high-purity Methanol	604, 8270, 1311	1ml
REPHE106	2,4-Dinitrophenol	2000µg/ml in high-purity Methanol	604, 8270, 1311	1ml
REPHE107	2-Nitrophenol	2000µg/ml in high-purity Methanol	604, 8270, 1311	1ml
REPHE108	4-Nitrophenol	2000µg/ml in high-purity Methanol	604, 8270, 1311	1ml
REPHE109	Pentachlorophenol	2000µg/ml in high-purity Methanol	604, 8270, 1311	1ml
REPHE110	Phenol	2000µg/ml in high-purity Methanol	604, 8270, 1311	1ml
REPHE119	Phenol	100µg/ml in Methylene Chloride	604, 8270, 1311	1ml
REPHE111	2,4,6-Trichlorophenol	2000µg/ml in high-purity Methanol	604, 8270, 1311	1ml
REPHE112	2,4,5-Trichlorophenol	2000µg/ml in high-purity Methanol	604, 8270, 1311	1ml
REPHE113	2,3,4,6-Tetrachlorophenol	2000µg/ml in high-purity Methanol	604, 8270, 1311	1ml
REPHE114	2,6-Dichlorophenol	2000µg/ml in high-purity Methanol	604, 8270, 1311	1ml
REPHE115	2-Methylphenol	2000µg/ml in high-purity Methanol	604, 8270, 1311	1ml
REPHE116	3-Methylphenol	2000µg/ml in high-purity Methanol	604, 8270, 1311	1ml
REPHE117	4-Methylphenol	2000µg/ml in high-purity Methanol	604, 8270, 1311	1ml
REPHE118	Dinoseb	2000µg/ml in high-purity Methanol	604, 8270, 1311	1ml
REPHE120	Pentachlorophenol	10µg/ml in Cyclohexane	528, 604, 8270	10ml
REPHE124	2,4-Dichlorophenol	1000 µg/ml in high-purity Methanol	528, 604, 8270	1ml
REPHE125	Picric Acid	1000µg/ml in Acetonitrile and Water (1:1)		1ml

Phenols Surrogate Standards

Product No.	Description in 1:1 Dichloromethane:Acetone	Concentration µg/ml	US EPA Methods	Pack Size
REPHE001-S	2-Fluorobiphenyl	1000	625	1ml
	Nitrobenzene D5	1000		
	p-Terphenyl-D14	1000		
	Methyl Orange	2500		
REPHE005-S	2-Fluorobiphenyl	5000	625	1ml
	Nitrobenzene D5	5000		
	p-Terphenyl-D14	5000		
	Methyl Orange	12500		