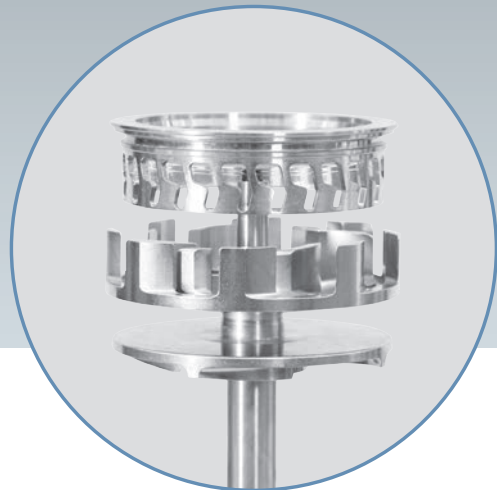


## Powder incorporation in recirculation | CMX 2000

### Applications

- > Hydro colloids
  - > Alumina suspensions
  - > Starch solutions
  - > Calcium carbonate
  - > Milk powder
  - > Fumed Silica
  - > Carbopol
- All applications where large amounts of solids are incorporated into liquids



Incorporating powders into liquids, without lumps and without dust, is an important part of many processes. The CMX 2000 utilizes a specially designed rotor that creates enormous suction to draw in solids, while it pumps the liquid at the same time. The liquid can then be re-circulated until all powders are incorporated.

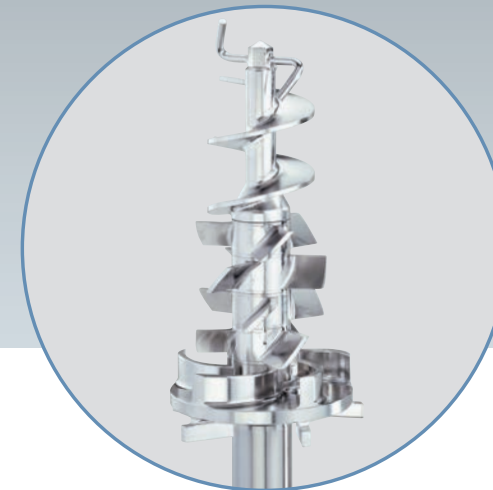
Additional dispersing can be accomplished by continually re-circulating without adding more powder. Dispersing can then be continued with closed powder inlet. Depending on the product respective the powder characteristics, high solids concentrations can be achieved.

Type	Motor power [kW]	Powder incorporation [kg/h]	Flow Rate (max.) [l/h]
CMX 2000/03 (magic LAB®)	0.9	250	1,500
CMX 2000/04 (PROCESS-Pilot)	4	1,300	5,000
CMX 2000/05	15	4,700	14,000
CMX 2000/10	30	8,900	32,000
CMX 2000/20	55	16,200	70,000
CMX 2000/30	110	25,500	110,000
CMX 2000/50	200	46,000	200,000

## Powder incorporation in a single pass processing | MHD 2000

### Applications

- > Fertilizers
- > Vitamins
- > Incorporation of color pigments
- > Pectines
- > Guar gum
- > Starches
- > Cellulose
- > Flour
- > Fillers



When production quantities require a continuous process, the MHD 2000 can get the job done. Solids and liquids are instantaneously mixed and dispersed in one step while maintaining a dust free environment. The MHD accurately combines the solid and liquid, and disperses them into a homogeneous, final product. Tanks and other auxiliary equipment can often be eliminated, saving capital and operating expenses. The MHD has a unique, patented design that doesn't require suction to draw in the powders, which essentially eliminates aeration. The MHD offers the greatest flexibility in production, and offers maximum product consistency. The MHD can also run in recirculation mode as an enrichment process. The MHD prevents bridging and aeration. Scalability is ensured by maintaining a constant tip speed of 23 m/s throughout the product range.

Type	Motor power [kW]	Total Flow Rate (max.) [l/h]	Max. solids capacity [l/h]
MHD 2000/03 (magic LAB®)	0.9	30	50
MHD 2000/04 (PROCESS-Pilot)	2.2	200	100
MHD 2000/05	5.5	700	500
MHD 2000/10	11	2,500	1,300
MHD 2000/20	15	7,000	2,800
MHD 2000/30	30	20,000	6,200
MHD 2000/50	75	40,000	11,200