



*Built to last*

DMN-WESTINGHOUSE

DIVERTER VALVES

Diverter valves by DMN-WESTINGHOUSE come in many types and sizes, suitable for a specific use or a variety of applications. The extensive diverter range comprises a series of plug diverters (dual pipe, single pipe, CIP suitable, gravity) and tube diverters (2-14 ports), some of which are also available in USDA Dairy accepted version. For the mineral industry, the BTD ball type diverter with its rugged design is very suitable for handling abrasive products.

The Art of Diverting



PTD  
Plug diverter  
Dual pipe



SPTD  
Plug diverter  
Single pipe



CIP-PTD  
Plug diverter  
CIP suitable



GPD  
Gravity plug diverter



USDA Dairy Accepted  
versions available



Versions conforming to  
ATEX 94/9/EC available



Versions conforming to  
EHEDG Type EL Class I  
available



Versions conforming to  
EC 1935/2004 available



2/3-TDV  
Tube diverter



M-TDV  
Multi port diverter



SBD  
Ball diverter  
Sanitary execution



BTD  
Ball diverter  
For abrasive products



FDV  
Flap diverter



FVV  
Fill vent valve



DMN - WESTINGHOUSE

The international world of processing comprises a large variety of industries and companies. DMN-WESTINGHOUSE has been designing and manufacturing rotary valves, diverter valves and other related components for the bulk solids handling industry for more than 40 years. As an independent company with no involvement in system design, our sole activity is the development, manufacture and sale of these components.

DMN-WESTINGHOUSE offers tailor-made solutions to the global food, dairy, plastics, (petro)chemical, pharmaceutical, mineral, power and biomass industries. Our line of rotary valves and diverter valves comprises a number of universal components that are suitable for many applications. We also have a range of dedicated components for use in specific industries or to handle specific products. Stringent hygiene requirements and/or low capacities are often required in the pharmaceutical industry. The SAL small sanitary airlock is designed specifically to meet these requirements. With the emergence of new industries, our rotary valves have also proven themselves to be capable of handling recycled plastic from cars, vegetable waste, and so on.

Diverter Valves

Diverter Valves	PTD	SPTD	CIP-PTD	2/3-TDV	M-TDV	GPD	SBD	BTD	FDV	FW
Food	⚙️	⚙️	⚙️	⚙️	⚙️	⚙️	⚙️	⚙️	⚙️	⚙️
Dairy	⚙️	⚙️	⚙️	⚙️	⚙️	⚙️	⚙️	⚙️	⚙️	⚙️
Animal Feed	⚙️	⚙️	⚙️	⚙️	⚙️	⚙️	⚙️	⚙️	⚙️	⚙️
Pharma	⚙️	⚙️	⚙️	⚙️	⚙️	⚙️	⚙️	⚙️	⚙️	⚙️
Plastics	⚙️	⚙️	⚙️	⚙️	⚙️	⚙️	⚙️	⚙️	⚙️	⚙️
Petro-chemical	⚙️	⚙️	⚙️	⚙️	⚙️	⚙️	⚙️	⚙️	⚙️	⚙️
Mineral	⚙️	⚙️	⚙️	⚙️	⚙️	⚙️	⚙️	⚙️	⚙️	⚙️
Power/Biomass	⚙️	⚙️	⚙️	⚙️	⚙️	⚙️	⚙️	⚙️	⚙️	⚙️
Recycling	⚙️	⚙️	⚙️	⚙️	⚙️	⚙️	⚙️	⚙️	⚙️	⚙️

⚙️ Recommended ⚡ Sometime used ⛔ Not recommended



MORRIS  
Morris couplings



DUC  
Discharge unit



PRV  
Pressure relief valve



sc/xsc  
Slide gate valve

Other Components

Other Components	Morris	DUC	PRV	sc/xsc	CSV
Food	⚙️	⚙️	⚙️	⚙️	⚙️
Dairy	⚙️	⚙️	⚙️	⚙️	⚙️
Animal Feed	⚙️	⚙️	⚙️	⚙️	⚙️
Pharma	⚙️	⚙️	⚙️	⚙️	⚙️
Plastics	⚙️	⚙️	⚙️	⚙️	⚙️
Petro-chemical	⚙️	⚙️	⚙️	⚙️	⚙️
Mineral	⚙️	⚙️	⚙️	⚙️	⚙️
Power/Biomass	⚙️	⚙️	⚙️	⚙️	⚙️
Recycling	⚙️	⚙️	⚙️	⚙️	⚙️

Built to last

ROTARY VALVES

Our rotary valves and diverters have a well-established reputation for being able to handle all kinds of dry powders and granular materials, such as sugar, cocoa, starch, flour, chemical ingredients, lime powder, china clay, fly ash and wood chips. A number of standard rotary valves can be upgraded, depending on the product to be handled. The housing can be made from Ni-hard casting when working with abrasive products, such as fly ash. Or the inside of the housing can be coated with chromium or tungsten, when working with mild abrasive products. What's more, the valve can be fitted with a special rotor when processing sticky products or starch, for example.

Feed your process



BL-BXL  
Blowing seal



BL-BXL DAIRY  
Hygienic blowing seal  
USDA Dairy accepted



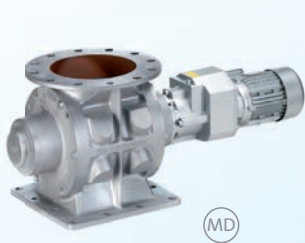
BL-BXL MZC  
Blowing seal with slide bars



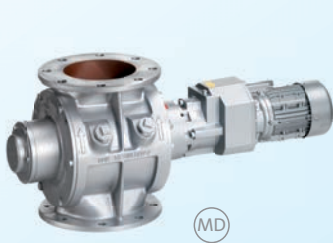
GOS  
High capacity blowing seal



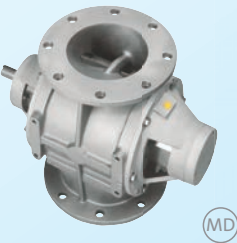
AML  
Airlock  
Extra large inlet



MLD  
Medium duty airlock



MALD  
Medium duty airlock



GL  
Granular airlock



SRV  
Medium duty airlock



DL  
Dust lock



AL-AXL  
Airlock



AL-AXL DAIRY  
Hygienic airlock  
USDA Dairy accepted



AL-AXL MZC  
Airlock with slide bars



SAL  
Sanitary airlock



CIP ROTARY VALVE  
CIP suitable  
Drop through or blow through



OS  
High capacity airlock



Rotary Valves											
Rotary Valves	AL/AXL	BL/BXL	Dairy/CIP	MZC	SAL	OS /GOS	AML	GL	MLD/MALD MGLD	DL	SRV
Food	Recommended	Recommended	Recommended	Recommended	Recommended	Recommended	Recommended	Not recommended	Recommended	Sometime used	Sometime used
Dairy	Sometime used	Sometime used	Recommended	Recommended	Recommended	Not recommended	Sometime used	Not recommended	Not recommended	Not recommended	Not recommended
Animal Feed	Recommended	Recommended	Sometime used	Recommended	Sometime used	Recommended	Recommended	Not recommended	Not recommended	Recommended	Recommended
Pharma	Sometime used	Sometime used	Not recommended	Recommended	Sometime used	Sometime used	Sometime used	Not recommended	Not recommended	Not recommended	Not recommended
Plastics	Sometime used	Sometime used	Not recommended	Not recommended	Not recommended	Sometime used	Sometime used	Recommended	Sometime used	Sometime used	Sometime used
Petro-chemical	Sometime used	Sometime used	Not recommended	Sometime used	Not recommended	Sometime used	Sometime used	Recommended	Sometime used	Sometime used	Sometime used
Mineral	Recommended	Recommended	Not recommended	Sometime used	Not recommended	Recommended	Recommended	Not recommended	Sometime used	Recommended	Sometime used
Power/Biomass	Recommended	Not recommended	Not recommended	Sometime used	Not recommended	Sometime used	Recommended	Not recommended	Sometime used	Recommended	Sometime used
Recycling	Sometime used	Sometime used	Not recommended	Not recommended	Not recommended	Recommended	Recommended	Sometime used	Recommended	Recommended	Sometime used

Recommended Sometime used Not recommended



USDA Dairy Accepted  
versions available



Versions conforming  
to EHEDG Type EL  
Class I available



Versions conforming to  
ATEX 94/9/EC available



Versions conforming to  
EC 1935/2004 available



High duty



Medium duty



Low duty



OFFICES  
The Netherlands (HQ)  
France  
Germany  
Russia  
United Kingdom  
United States

www.dmnwestinghouse.com

Built to last





Rotary Valves



Diverter Valves



Other Components

[www.dmnwestinghouse.com](http://www.dmnwestinghouse.com)