

# Explosion-Proof Construction Certificated inline monitor CM-ISA



**Intrinsically Safety Standard  
(Explosion-Proof Certification.)**

**Certified Classification Ex ia IIB T3 Ga Ta=40°C**

**Installation Point: Hazardous Area (Zone0-2)**



Display Unit

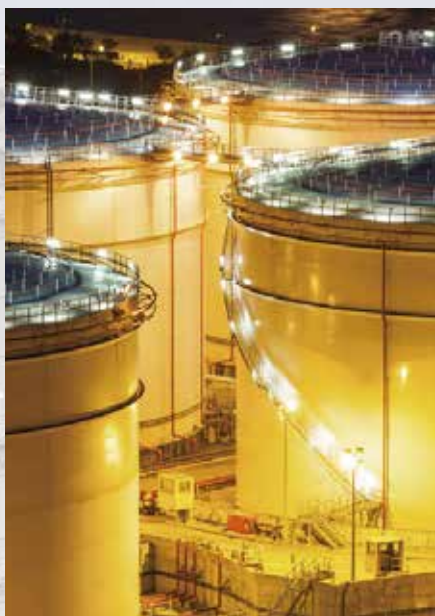


Detection Unit

**3  
Points**



**Made in Japan**



**Available Free Demo**



**Quick Response**

## Specifications

Measurement Scales	Refractive Index (nD), Brix, concentration (%), temperature.
Range	Refractive index: 1.32000 to 1.49100, Brix : 0.0 to 80.0%, Temperature: -15 to 160°C/5 to 320°F,
Accuracy	Refractive index: ±0.0002, Brix : ±0.1%, Temperature : ±1°C / ±1°F
Resolution	Refractive index: 0.00001, Brix: 0.01% or 0.1% switchable, Temperature: 0.1°C / 0.1°F
Temperature Compensation	5 to 100°C
Light Source	LED(D-line approximation)
Temperature Sensor	Thin-Film Platinum Sensor
Output	RS-232C, DC4 to 20mA
Material	Wetted section: SUS316L, Prism: sapphire, Sample Stage: Kalrez, Packing: Kalrez
Pressure Resistance	0.98MPa(10kgf/cm <sup>2</sup> )
International protection class	IP67 JIS-C0920
Explosion-proof (Intrinsically safe) specification	Explosion-proof guide
Dimensions and weight	Detection section: 160(W)×167(D)×110(H) mm, 1.3kg Calculation display section: 160(W)×167(D)×110(H) mm, 2.4kg Zener barrier: 172(W)×75(D)×78(H)mm

## Sample Inlet

As a standard, we have these kinds like below.

### Hose Connector

#### Compression Fitting 10mmφ

Straight Type (In case of installing to the middle of straight pipe)

Ferrule	fitting size 1S 2S 3S
Screw union	fitting size 1S 2S 3S
Flange	fitting size 25A 40A 65A

π Type (In case of installing to the middle of straight pipe)

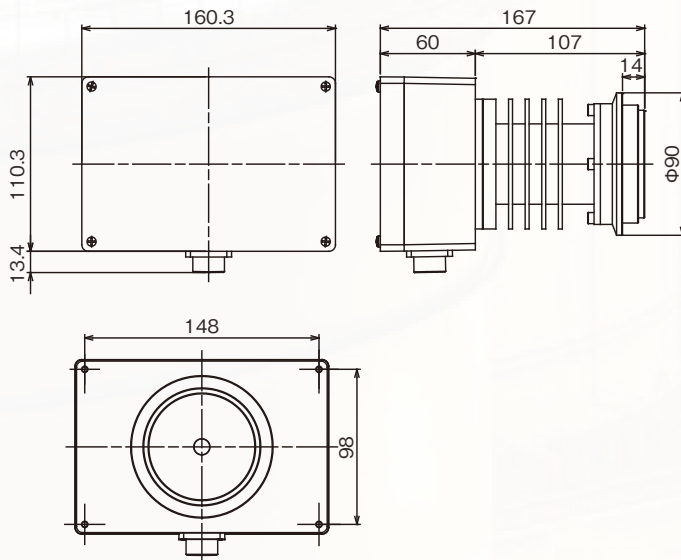
Ferrule	fitting size 2S 3S
Screw union	fitting size 2S 3S
Flange	fitting size 40A 65A

L Type (In case of installing to the L part of pipe)

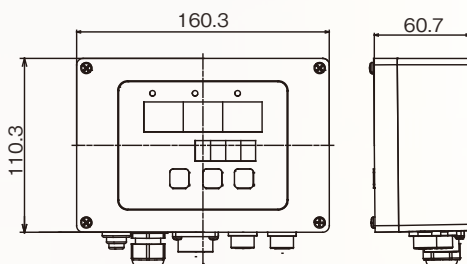
Ferrule	fitting size 1S 2S 3S
Screw union	fitting size 1S 2S 3S
Flange	fitting size 25A 40A 65A

## Dimensions

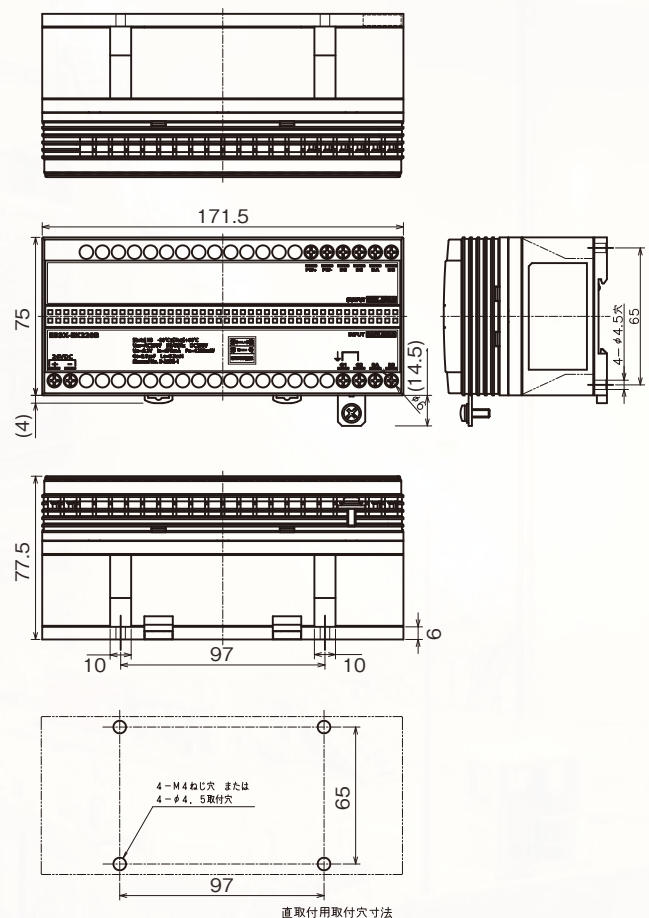
### < Detection section >



### < Calculation display section >



### < Zener barrier >



All ATAGO products are designed and manufactured in Japan.

**ATAGO CO., LTD.**

<http://www.atago.net/> [overseas@atago.net](mailto:overseas@atago.net)

Headquarters: The Front Tower Shiba Koen, 23rd Floor  
2-6-3 Shiba-koen, Minato-ku, Tokyo 105-0011, Japan  
TEL : 81-3-3431-1943 FAX : 81-3-3431-1945



**HACCP GMP GLP**

ATAGO products comply with HACCP, GMP, and GLP system standards.